

Shutdown Procedure (with access to driver's cab)

Before switching the engine off: select 'Neutral' and apply the Park Brake.



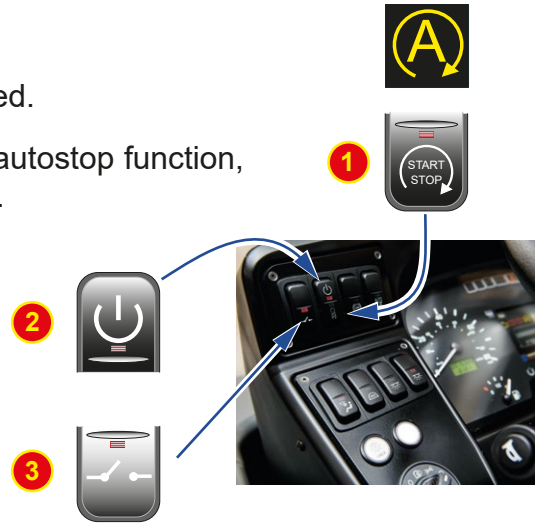
ALWAYS apply the parking brake before leaving the cab.

The engine may stop due to Auto Stop. If stopped, the Auto Stop-Start Dash Symbol will be displayed.

If Auto Stop does not stop the engine, or where there is no autostop function, press the lower part of the ignition switch to stop the engine.

With the engine Stopped, press the upper part of the ignition switch to turn off the ignition and prevent the engine from restarting.

Turn Off the master switch.

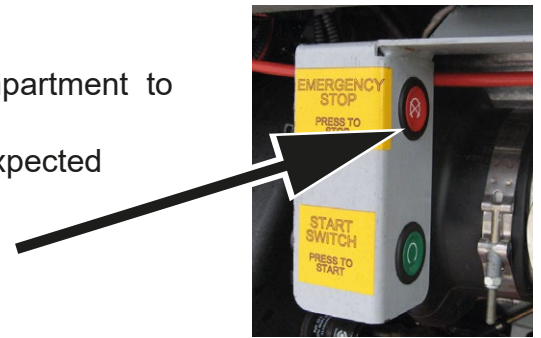


Shutdown Procedure (without access to driver's cab)

The emergency STOP control is located in the rear engine compartment to the left of the engine in the rear opening.

CAUTION: The gas struts may make the lid open faster than expected

Press and hold the RED button to stop the engine.



An engine emergency STOP is fitted inside the flap for the engine oil filler at the rear right hand side of the vehicle.

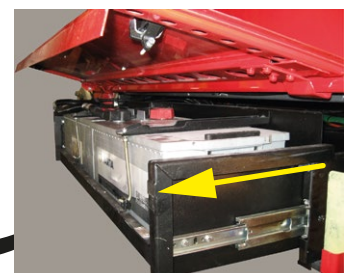
Press and hold the RED button to stop the engine.



24V Battery access

Battery access is via a lift-up flap at the front, below the driver's cab.

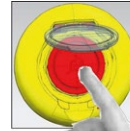
Lift the flap and release the antiluce fasteners, then slide the tray out to access the connections.



Entrance & Exit doors emergency operation

To open the door from outside, push the emergency button located near the edge of the doors.

Lift the flap and push the button to release the doors.



To open the door from inside, push the emergency button located near the top edge of the doors.

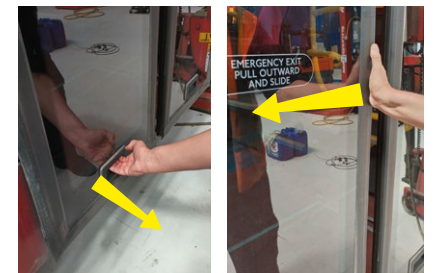
Lift the flap and push the button to release the doors.



If the doors do not operate they can be pushed open manually.

Centre / Exit doors:

Pull the door outwards using the handle at the bottom then Slide the doors open.



Front/entrance doors:

Push the outer edge inwards, then pivot the door into the bus.



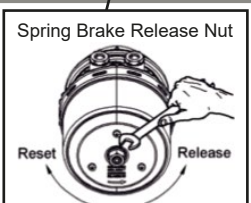
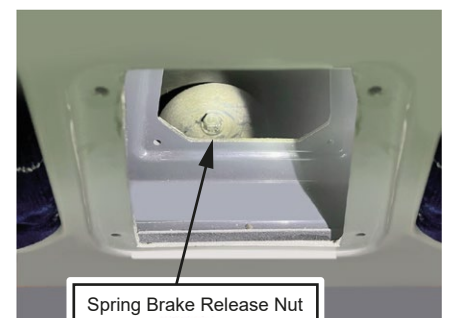
Releasing the park brake

An air coupling is located on the front of the vehicle to provide a means of supplying air to the braking system while the vehicle is being towed. Where there is no means of supplying air to the vehicle being towed the parking brake (spring brake) must be released.

Internal access to the drive axle actuators is via access panels between the rear seats over the rear axle. Use an allen wrench to remove the outer panel.

This gives access to an inner panel that is also retained with allen screws. this then affords access to the top of the brake actuator.

Use a 24mm spanner to wind the actuators off to release the brakes.



⚠WARNING: In this condition the brakes are completely inoperative. Wheels **MUST** be chocked.